

***USM***

**USM Airportsystems AG**



## **USM Airportsystems in aviation range**

Check-in counter

Boarding pass control counter

Security screening furniture

Gate counter, mobile gate counter

Airport information / Lost & Found counter

Passenger guidance system

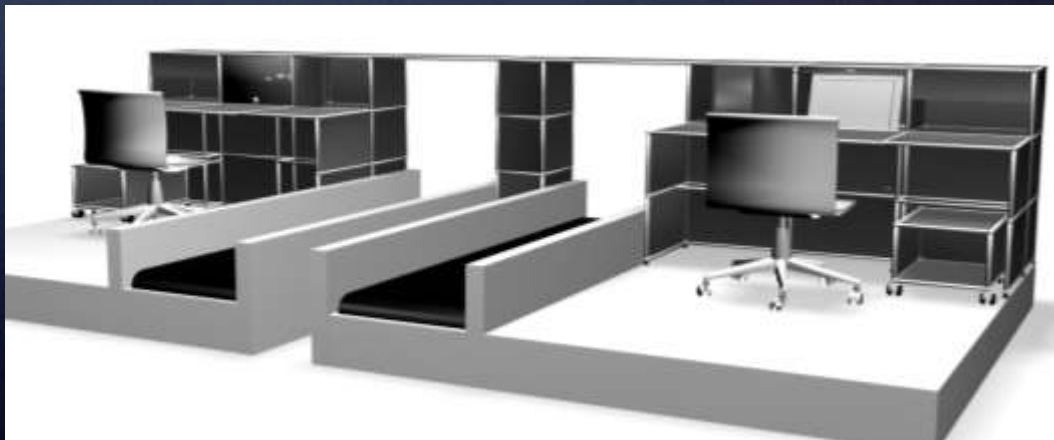
## Check-in counter

Basic module for two check-in workstations with unlimited possible modular add-ons

Integration is possible with classic conveyor belt and automated bag-drop-off systems; suits all widths of baggage conveyor belts

Allows for convenient and easy installation of CUTE equipment such as:

- Bag-tag printer
- Boarding pass printer
- PC workstation with TFT monitor
- Operator panel for belt controls including emergency stop button
- Baggage weight displays for agent and passenger
- Service telephone
- Barcode scanner etc.





## Boarding pass control counter

Basic module for one or two  
workstations and/or one or two access  
control gates

Includes the facility to integrate access  
control scanners fulfilling the IATA  
BCBP (Bar Coded Boarding Pass) to  
100%



## Security screening furniture

Re-check table and transportation table for passenger hand luggage

Re-check table for staff luggage

EDT cabinet for IONSCAN 500 DT and transportation table

Size and components depending on customer requirements:

- Monitor support
- Keyboard support
- CPU
- UPS and battery pack
- Multiple power sockets
- Storage space for tools and consumables
- Optional stainless steel top







## Gate counter

Basic module for one workstation,  
easily extendible to two workstations

Includes the facility to integrate access  
control scanners fulfilling the IATA BCBP  
(Bar Coded Boarding Pass) to 100%

Allows for the convenient and easy  
installation of:

- Boarding pass reader, magnetic strip reader or barcode scanner
- PC workstation with TFT monitor
- Passenger list printer
- Throughput paper storage
- Service telephone
- PA systems etc.

Optional extension shelf for keyboards  
and printers





## Mobile gate counter

Minimized module also available as mobile boarding unit for temporary use starting from 50cm by 40cm

Includes the facility to integrate access control scanners fulfilling the IATA BCBP (Bar Coded Boarding Pass) to 100%

Allows for the convenient and easy installation of:

- Boarding gate reader, magnetic strip reader or barcode scanner
- PC workstation with TFT monitor
- Service telephone
- PA systems etc.

Optional castors or glides

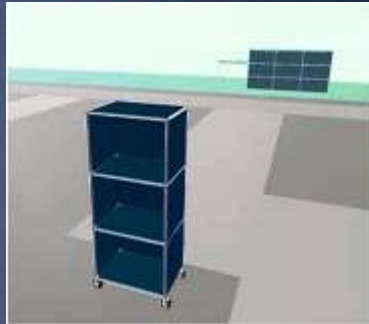


## Boarding counter evolution

Size and components depending on customer requirements:

- Drop down door
- Flip up door
- Extension door and shelf

Free positioning of magnetic cable guides and cut outs



basic structure, w/d/h=50/35/113 cm  
(19.7"/13.8"/44.5")



add. storage unit drop down door  
w/d/h=50/35/113 cm  
(19.7"/13.8"/44.5")



add. keyboard drawer and screen  
w/d/h=50/35/113 cm  
(19.7"/13.8"/44.5")



add. drawer for boarding list printer  
w/d/h=50/35/113 cm  
(19.7"/13.8"/58.3")



add. boarding card scanner unit  
w/d/h=70/35/113 cm  
(27.6"/13.8"/58.3")



add. drawer for cash box or storage  
w/d/h=70/35/113 cm  
(27.6"/13.8"/58.3")



add. credit card reader unit, opt. with  
cash box, w/d/h=90/35/113 cm  
(36.1"/13.8"/58.3")





## Lost & Found

### Airport information desk

Possibility to integrate any number of workstations in single or multiple counters

Optional back office area for shelving and storage

Allows for the convenient and easy installation of:

- PC workstation with TFT monitor
- Printer and copier
- Service telephone
- Audio and display systems etc.



## Passenger guidance system (USM Display)

USM Display can be used as a passenger guidance system and/or room division system

The panels are available in metal, perforated metal (acoustic version) satined or transparent glass (printable)

Optional additions:

- Poster rails
- Display panels
- Pivoting display shelves
- Up lights for indirect lighting
- Power and data cables can be looped through the panels with free position of outlets

## **USM Airportsystems in non-aviation range**

Waiting & lounge interior

Miscellaneous counters and displays

Office interior

Conference room solutions

Car rental and travel agency

Shop and hotel

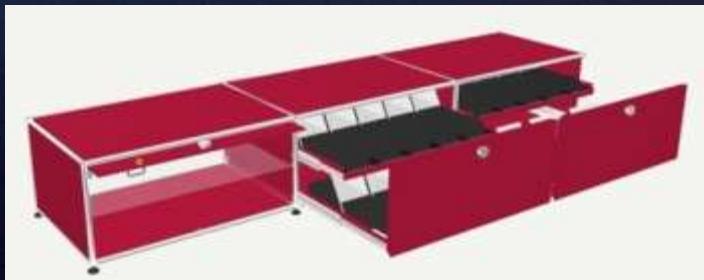
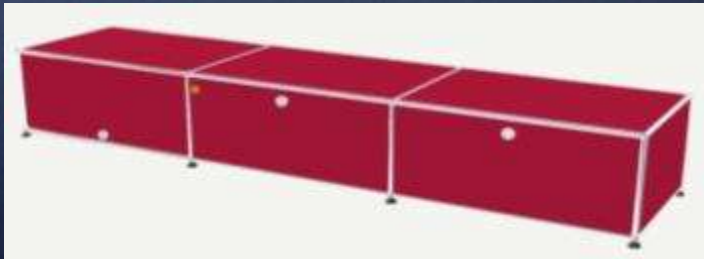




## Waiting and lounge interior

The constancy of high quality materials combined with timeless aesthetics guarantee excellent furniture for lounge interior such as :

- bars
- low boards for TV
- serving carts
- gastronomy cases
- low and bar tables





## Miscellaneous counters & displays

In addition to cubical forms, polygons or counters can be generated

Counters can be placed within a room or open area to be seen and approached within a 360° radius

Variations:

- Central information desks
- Information and advertising backlit displays
- Meeting points



## Office interior

USM Modular Furniture looks back on 45 years of experience, know how and R&D

Annually approx. 8000 workstations and conference rooms are delivered worldwide



## Conference room solutions

Flexible conference table systems, adjustable table with integrated media systems

Sideboards and trolleys for storage and conference technology







## Flexible solutions

The various color options and ability to print panels allows tenants to modify the furniture to suit their CI yet the airport benefits from a unitary picture

Solutions for:

- Car rental companies
- Travel agencies
- Retail and shops
- Airport hotels





## Retail and shop solution

Highly functional modules for shop fitting and show casing, allow shop tenants to benefit from a unitary corporate identity

Airports are able to lease space to tenants with furnished or non-furnished glass showcase cabinets with integrated spot lights



## **Product**

## **Product – general advantages**

- Easy replacements of panels permits re-labelling of individual areas or complete modules
- Speedy conversion, dismantling and extension possible in all dimensions, all individual components can be re-used
- Replacement of panels decades later using drop down doors or drawers with the same or different color schemes
- Glass panels allow for backlighting using LED lights, no heat radiation
- Customised colors and modification to suit the user's CI concepts available
- Surfaces can be completely modified or replaced depending on wear and tear: metal, wood, HPL, stone or glass
- No fire load confirmed by Building Material Test Certificate B1
- High residual value following leasing agreements in case of non-use
- Alterations or rebuilding can be undertaken on site and by owners themselves resulting in low maintenance costs
- Temporary installations based on attractive leasing concepts



## Product – integration of airport technology

- Access control scanners
- Displays and touch panels for baggage scales
- Bag tag-, label- and document printers
- Control keypads for baggage transport
- Emergency button
- PC, TFT-monitors, keyboards

### Built in options:

- Beneath or behind glass
- Flush-mount integration
- Embedded integration
- On top with cable cut out

### Cost and time efficiency:

- All integrations, fixtures can be striped down and rebuilt
- Low replacement costs
- Short downtime for replacements (< 30 min.)



## Product - measurements

Standard tube widths, depths and heights are shown in mm. Standard panels are shaded and doors marked

The basic structure of the furniture is created according to the desired function

Various accessories can be added for further customization. The use of metal materials guarantees a long and durable life of the product

Options such as acoustic panels for sound absorption and glass doors for showcasing, enhance the utilization of the furniture system

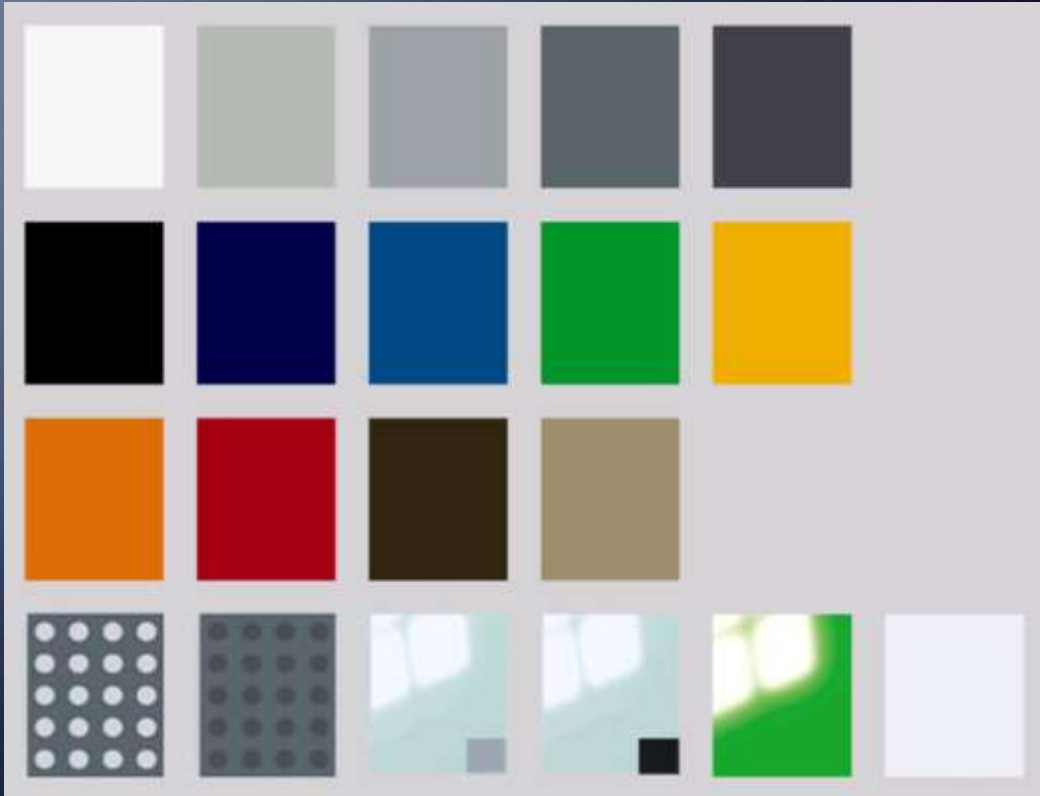
	750	500	395	350	275	250	200	175	150	125	100
100											
125											
150											
175											
200											
250											
275											
350											
395											
500											
750											



## Product – colors

All metal panels, including the acoustic elements are powder coated and available in fourteen standard colors

In applying the color, USM places great importance on an environmentally friendly, non-harmful coating process



## **Product – Greenguard certificate**

Since 2007 USM holds the Greenguard certificate for USM Haller, USM Haller table and USM Kitos

The Greenguard certificate establishes USM as a producer of interior products with low chemical emissions

The Greenguard certificate has allowed USM to qualify for Leadership in Energy and Environmental Design rating system that addresses best-in-class building strategies





## Product – lifecycle and resource recycling

Throughout a USM product life cycle, raw materials cause more than half of any negative impact on the environment

When materials are selected, great value is placed on their lifespan as well as their ability to be recycled. Only then can USM ensure the justifiable use of resources in mass quantity production





**USM**

## References



**Schedule of references**

<b>2008 – 2010</b>	Leipzig-Halle Airport, DE, pilot project
<b>2010</b>	USM Airportsystems AG established, CH
<b>2010 – 2011</b>	Product design & development
<b>2011 – 2012</b>	BER Airport Berlin, DE
<b>2011 – 2015</b>	New Doha International Airport (Hamad Airport), QA
<b>2013 – 2015</b>	Avinor, NO, general agreement for 46 Norwegian airports
<b>2013</b>	Torp Airport, Sandefjord, NO
<b>2013 – 2015</b>	Condor, Thomas Cook in cooperation with MIS Choice, US
<b>2015</b>	Marseille Airport
<b>2015</b>	Cote D'Azur Airport, France
<b>2015</b>	Zürich Airport

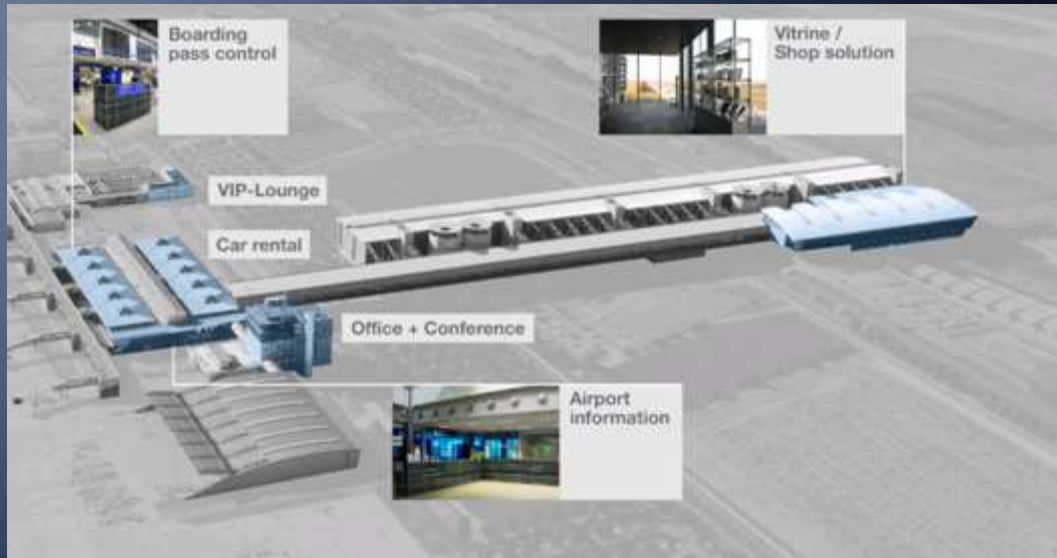
## Reference Berlin Brandenburg International Airport (BER)

In April 2012 USM Airportsystems received the order to deliver check-in counters for the interim terminal as a 10 month rental contract

Completion: May 2012







## Reference Leipzig-Halle Airport (LEJ)

Since 2006 the Leipzig-Halle Airport has developed into a reliable partner for USM Modular Furniture solutions in the aviation and non-aviation range.

Completion: Ongoing

*“ Product quality and product flexibility in the implementation of passenger processing technology and ultimately the cost benefit were, without doubt, the driving factors in our decision for this product”*

Thomas Werner, Process Engineering Manager, Leipzig-Halle Airport

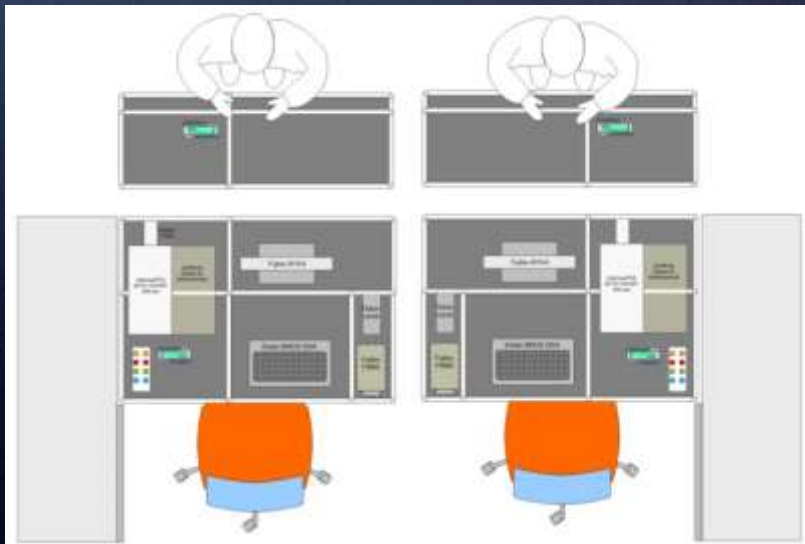






## Reference Berlin Brandenburg International Airport (BER)

Flush mount integration of technology  
from Arinc, Vanderlande and Soehnle  
Professional



**Reference Avinor  
General contract for  
46 airports, Norway**

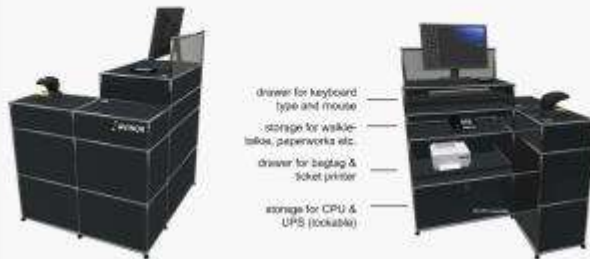
Check-in counter 1 or 2 modules

Mobile check-in counter

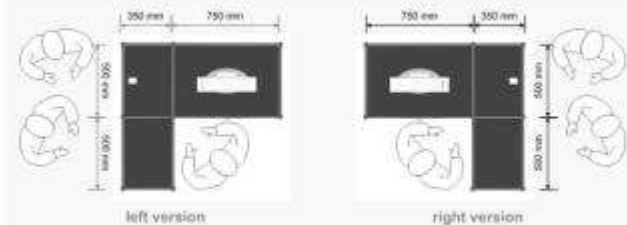
Gate counter 1 or 2 modules

Information desk

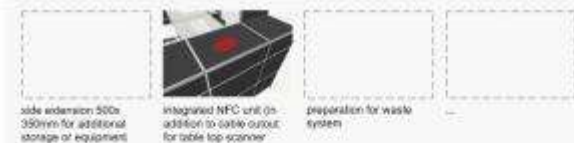
XX. gate counter - 1 lane



measurements



options



- please note: for external measurements add 20 mm in each direction  
 - integrated cable management with free adjustable cable conductors  
 - colour of panels: mic grey RAL, xxix, tuben-trails - chromel  
 - chapter for download here: [www.usm.com/xxixgatecounter/publicationgate1/](http://www.usm.com/xxixgatecounter/publicationgate1/)  
 - for further information please visit Avinor internal website: <https://avinor.co.uk/xxix>

## Reference Avinor General contract for 46 airports, Norway

Through close cooperation with Avinor:

- Examining passenger handling processes
- Airport architecture
- Interior planning
- IT requirements

A product manual has been compiled to facilitate orders:

- Counter type
- Number of modules
- Orientation, left or right
- Technical integration with customer's specification
- Individual requests as per airport needs

## Reference Avinor General contract

Check-in counter  
1 or 2 modules

Mobile check-in version complete with  
CUTE equipment

Final rendering





## Reference Avinor General contract

Gate counter 1 module

Final rendering



## Reference Avinor General contract

Gate counter 2 modules

Final rendering



## Reference Avinor General contract

Information desk 3 modules

Final rendering



## Reference Avinor General contract

Information desk 2 modules with  
glass cabinet for merchandising

Final rendering







## Reference Avinor, Alesund Airport, (AEL)

Boarding counter at the reconstructed  
departure area

Prototype test for general contract





## Reference New Doha International Airport (DOH)

Security screening furniture

Long term customization from  
Feb 2012 - Sep 2013, ongoing

Architects were unhappy with the aesthetics and functionality of products on offer. The limited space available asked for a compact solution

With the technical specifications provided by NDIA, the project included:

- Product development of 5 units by USM R&D department
- 5 mock-ups in Doha
- New design with stainless steel surface
- Production of 790 units





## Reference New Doha International Airport (DOH)

Recheck table for staff hand luggage



## Reference New Doha International Airport (DOH)

Recheck table for staff hand luggage  
Stainless steel surface  
Drop down door







## Reference Smiths Heimann and New Doha International Airport (DOH)

Security screening unit

Single re-check console and transport table  
including:

- Monitor support
- Keyboard support
- CPU
- UPS and battery pack
- Optional stainless steel surface





## Reference Smiths Heimann and New Doha International Airport (DOH)

Security screening unit

Single re-check console and transport  
table including:

- Monitor support
- Keyboard support
- CPU
- UPS and battery pack
- Stainless steel surface





## Reference Smiths Heimann and New Doha International Airport (DOH)

Security screening unit

Cabinet for IONSCAN 500 DT including:

- UPS and battery
- storage for IONSCAN 500 DT
- storage for consumables and tools
- customized stainless steel surface





## Reference Smiths Heimann and New Doha International Airport (DOH)

Security screening unit

Cabinet for IONSCAN 500 DT including:

- UPS and battery
- storage for IONSCAN 500 DT
- storage for consumables and tools
- customized stainless steel surface







## **Reference MIS Choice Inc. In cooperation with Condor**

Customized mobile check-in counter  
including:

- UPS and cable winder
- CPU
- Drawer for ticket & bag-tag printer
- Keyboard unit
- Wide angle monitor support

